

**Zhermack** 

Dental

# relining materials

---

elite soft relining

U13363 6-2016-05 Last Update-2016-05

 **Zhermack S.p.A.**

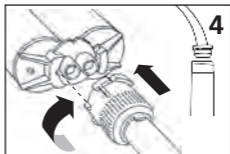
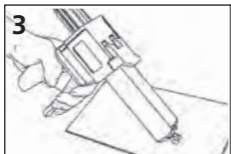
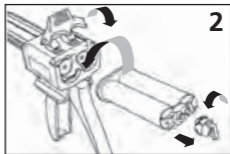
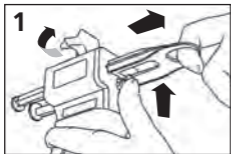
Via Bovazecchino, 100 | 45021 Badia Polesine (RO) Italy

T +39 0425 597611 | F +39 0425 53596

info@zhermack.com | www.zhermack.com



elite® soft relining 1:1 (50 ml)  
Instruction for use with D2 dispenser



- |    |    |    |    |    |    |    |
|----|----|----|----|----|----|----|
| IT | EN | FR | ES | DE | PT | NL |
| FI | EL | DA | SV | SL | RU | PL |
| CS | TR | RO | HR | HU | SK | LV |
| LT | ET | CN | AR | BG |    |    |

**Table 1. TECHNICAL DATA**

	<b>ELITE RELINING MATERIALS</b>	<b>ELITE SOFT RELINING</b>
1	Dimensional stability	< 0.2%
2	Elastic recovery	99,9%
3	Hardness Shore A	35
	<b>TIMES FOR CLINICAL USE*</b>	
4	Mixing Time	Automix
5	Working Time	1:00 min
6	Functionalisation time (direct method)	1:00 min
7	Time in mouth (minimum)	5:00 min
8	Setting time for indirect method	Approx 30:00 min at 23°C (73°F) / approx 10:00 min at 40 – 45°C (104 – 113°F)

\*The times mentioned must be intended from the start of mixing at 23°C (73°F).

**ELITE SOFT RELINING** is a range of materials designed for the preparation of soft relining on removable, partial or complete prostheses with a polymethylmethacrylate base. Easy to use, they can be utilised both with the direct and indirect technique.

#### COMPOSITION

**ELITE SOFT RELINING** are addition silicones (polyvinyl siloxane) two-component, autopolymerizing, packaged in cartridge.

#### INDICATIONS

Indicated for all types of removable prostheses.

**ELITE SOFT RELINING:** durable relining on removable prostheses. Establishes the prosthesis permitting masticatory load absorption of the alveolar and mucosal ridges.

Favours tissue healing after surgery and extractions.

#### CONTRAINDICATIONS

The materials contain polyvinyl siloxane and platinum catalysts. Do not use in cases of proven individual hypersensitivity to some or all of the product components.

#### ADVANTAGES

Water-repellent.

Convenient and fast, they allow considerable time saving.

Excellent adhesion to the base of the prosthesis.

#### PREPARATION OF THE CARTRIDGE DISPENSER

Withdraw the dispenser rack up to stroke starting point, using the black lever underneath the rack.

Raise the edge of the cartridge. Place the cartridge in the dispenser, following the "V" route, indicating correct positioning. Providing the cartridge is precisely inserted, the cartridge lock must close without any difficulty.

Remove the cap. For precise flow control, lightly squeeze out a minimum quantity of product until the two components flow out uniformly. Clean off any excess material.

Fit the mixing rod, following route "V" on the coloured ring-nut. This must line up with the corresponding seat on the cartridge.

The device is now ready for use.

You may leave the mixing rod inserted after use, or remove it, replacing the cap.

For further clarifications on loading and using the dispenser, consult the annexed "Dispenser D2 instructions".

## **METHOD OF USE**

### **PRE-TREATMENT OF THE PROSTHESIS**

Completely remove any silicone relining.

With the use of a bur, reduce the base of the prosthesis approximately 1-2 mm.

Shorten the vestibular, lingual and dorsal margins of the base of the prosthesis by 2-3 mm and create on its edges a shut-off margin with a minimum depth of 1mm by 1.5mm in height.

Carefully clean and remove grease from the prosthesis, using ethyl alcohol and allow to dry.

### **DIRECT METHOD**

Apply the **PRIMER** uniformly on all the surfaces of the previously roughened and clean prosthesis on which the material will adhere to, taking care to also treat the marginal areas. Allow to dry for at least 1 minute.

After **PRIMER** application, immediately close the vial.

Avoid contact with saliva, moisture, residual grease, monomers and contact with latex gloves in as these prevent adhesion of **ELITE SOFT RELINING** to the prosthesis.

With the appropriate dispenser, evenly extrude a layer of approximately 2-3 mm of **ELITE SOFT RELINING** from the cartridge following the cores of the ridges, on the vestibular, lingual and dorsal edges and on the remaining involved area, work with the aid of a spatula **as necessary** for even distribution.

Insert the prosthesis in the mouth, leaving **silicone** to adapt to the mucous membrane for a few seconds, then functionalise it following the usual methods for approximately 1 minute.

Wait for product polymerization which will be complete in approximately 5 minutes, then remove the prosthesis and finish as described in the paragraph "Final Finishing / Polishing of the Prosthesis."

### **INDIRECT METHOD**

Once carried out the master model or putting the piece in muffle, follow directions as described previously in "pre-treatment of the prosthesis" and in "direct method", then proceed as usual, working on the master model or with the muffle technique.

The polymerization time at room temperature\* is approximately 30 minutes, otherwise put the piece in water at a temperature of 40-45°C (104 – 113°F) in a steamer for approximately 10 minutes.

Remove the prosthesis from the muffle or model, reclean and repolish as described in the points below.

\*Expected times refer to a room temperature of 23°C (73°F), they shall be extended in the event of a lower temperature or shortened for a higher temperature.

### **FINAL CLEANING/POLISHING OF DENTURES**

Trimming the uneven points: remove excess material with a scalpel or a pair of sharp scissors. Remove rough parts using the supplied cutter or suitable sharp tools.

To seal the edges, apply more **PRIMER** on the base of the dentures only (rigid resin), barely following the contour on the relining.

With **ELITE SOFT RELINING** use **VARNISH** , which should be utilised at a 1:1 ration between components **A** and **B**.

### **CHARACTERISTICS OF THE MATERIALS - (Technical Data)**

The characteristics of the material are recorded in Table 1 (Table 1):

Line 1: Dimensional stability (Dimensional stability)

Line 2: Elastic recovery (Elastic recovery)

Line 3: Hardness Shore A (Hardness "Shore A")

Times for clinical use\* - (TIMES FOR CLINICAL USE\*)

Line 4: Mixing time (Mixing Time)

Line 5: Working time (Working Time)

Line 6: Functionalisation time (Direct method)

Line 7: Time in Mouth (Time in Mouth)

Line 8: Setting Time for indirect method (Setting Time for indirect method)

\*Times for clinical use (recorded in **Table 1 – Table 1**, characteristics of the material) are intended in mixing at a temperature of 23°C (73°F). Higher temperatures reduce these times, lower temperatures increase them.

Measure 3 drops from each vial on the appropriate plate and mix carefully with a brush. Then distribute the varnish on the prosthesis with special care on the margins in contact with the rigid resin.

The time allowed for this operation is approximately 1 minute.

If the quantity is insufficient, repeat the operation.

Allow to dry for at least 5 minutes at room temperature.

**NOTE:** if corrections or additions are necessary, just roughen the area in question, and after cleaning and drying, apply **ELITE SOFT RELINING** repeating the procedure we described. Apply **PRIMER** only in the event of direct contact with the base resin.

### **INSTRUCTIONS FOR PATIENTS**

Gently clean the relined dentures rubbing them with liquid soap under running water. There is no need to leave the dentures to soak. Do not rub too much, as is usually done for denture teeth and base, but use a very soft brush if necessary. Specific denture cleaning products may change the colour without modifying the characteristics of the material.

### **PRODUCT STORAGE**

The product has a maximum life of three years, if kept at a temperature of 23°C (73°F).

Carefully close the **PRIMER** and **VARNISH** bottles after use.

**WARNING:** Subjects sensitive to vinyl polysiloxanes may develop irritations or other allergic reactions.

## IMPORTANT

Avoid direct contact of **PRIMER** and **VARNISH** with skin and eyes. In the event of accidental contact, rinse thoroughly with running water.

Latex gloves may contaminate the product: avoid contact also with the base of the denture before applying the Primer.

The materials are chemically resistant: avoid contact with clothes.

## PRESENTATION

<b>ELITE SOFT RELINING</b>
1 Cartridge of Elite Soft Relining 50 ml.
6 Mixing tips
1 Primer 4 ml.
1 Varnish 5 ml. A + 1 Varnish 5 ml. B
1 Finishing cutter
12 Small brushes
1 Brush pouch
1 Mixing plate

**IMPORTANT REMARKS:** Consulting services on the use of our products, provided in any form, be that verbal, written or through demonstrations, are based upon the current state of dentistry and of our know-how. They are to be considered as non-binding information, also in relation to possible third party claims, and do not exonerate the user from personally checking whether the product is suitable for the planned use. Use and application by the user take place under no possible control by the Company, and are therefore under the user's responsibility. Possible liability for damages is limited to the value of goods supplied by the Company and utilized by the user.

**FOR DENTAL USE ONLY**