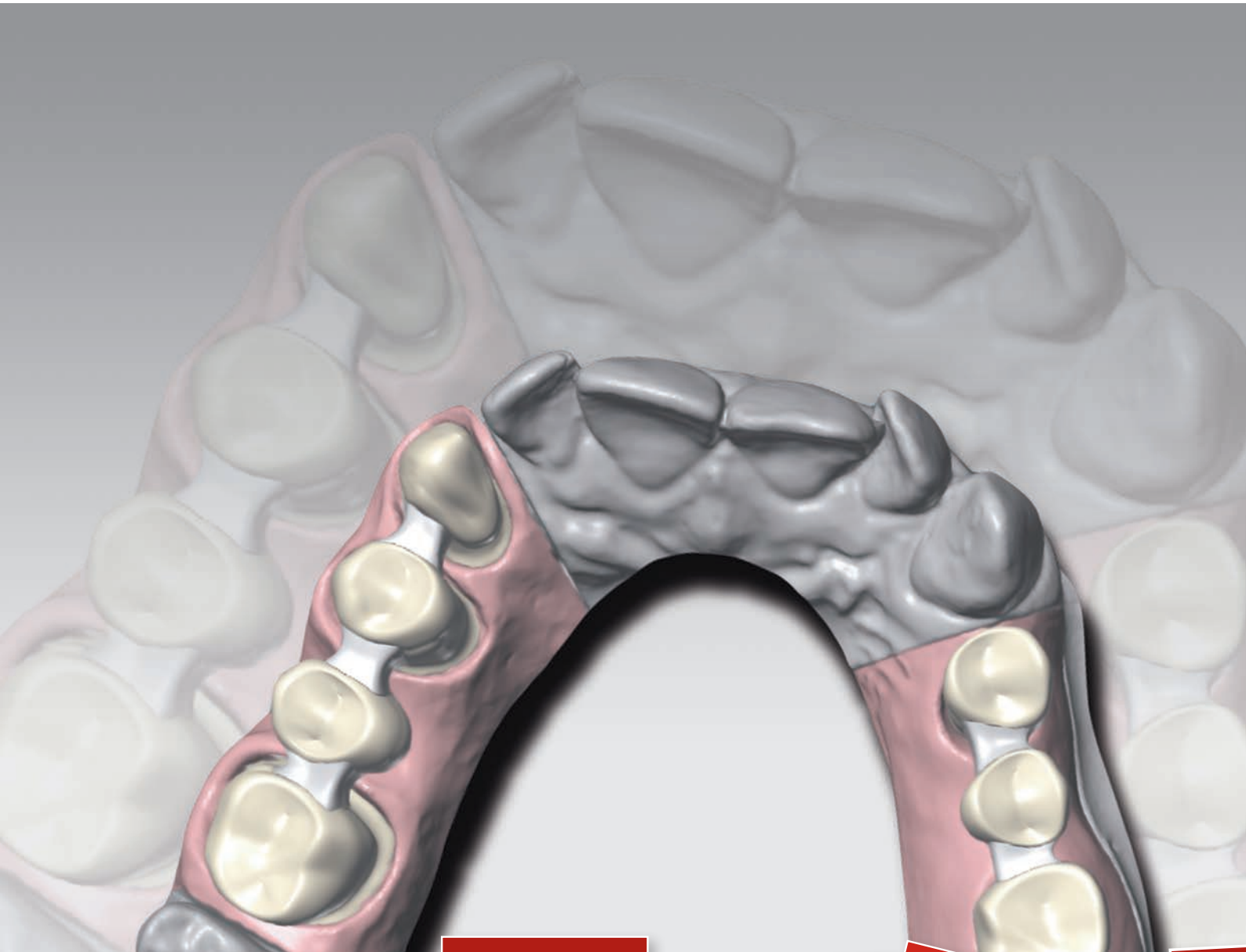


CAD/CAM solutions



Technical
CAD/CAM products

Zhermack 
Dental

Zhermack CAD/CAM solutions

CAD/CAM solutions is the new range of silicones and stones scannable without using reflective sprays, developed by **Zhermack** to guarantee maximum performance in the acquisition of 3D data and satisfy the needs of an ever more demanding market.

The ever more advanced raw materials used in the **CAD/CAM solutions** range satisfy the highest possible quality standards and are the result of **Zhermack's** many years of know-how.

The capacity for maximum reproducibility of detail and excellent surface contrast of **Zhermack CAD/CAM solutions** products make scanning easy and improve the precision of processes involving data acquisition by scanner.

Platinum75 CAD

A-silicone laboratory putty

Occlufast CAD

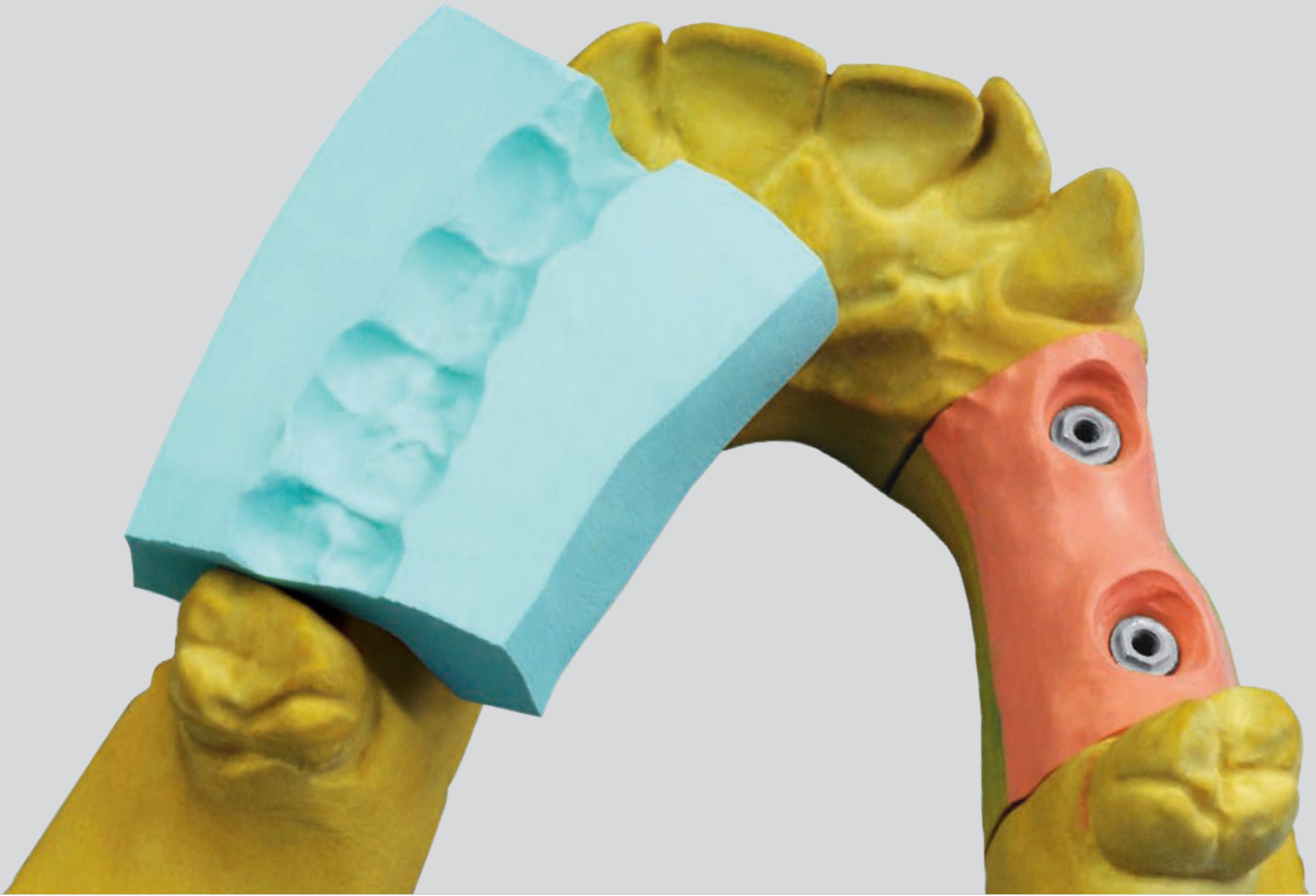
Medium body A-silicone for bite registration

Gingifast CAD

Light body A-silicone for gum reproduction



CAD/CAM solutions



Elite Master

Resin-reinforced class IV stone

Elite Rock

Extra-hard class IV stone

Platinum75 CAD

Scannable A-silicone putty for laboratory applications

The ideal compromise between hardness, scannability and reproduction of detail



USES

- Scannable bite regulation keys
- All types of mask requiring maximum precision and reproducibility of detail

ADVANTAGES

- Light "clinical" blue colour to easily identify possible imperfections
- Formula perfectly scannable with CAD/CAM systems with optical, laser and tactile readings, without the need for reflective sprays
- Optimum consistency and surface for extremely precise masks in numerous applications
- Quicker working times (fast set, 4 min*) to improve efficiency in laboratory applications
- Shore-A hardness 75 for numerous uses and to facilitate finishing with scalpels or burs.

TIPS

Recommended for all CAD/CAM system users for producing scannable bite regulation keys.

In combination with **Platinum95**, ideal to create high precision masks using the pressure technique and to obtain artificial gums or elements made from high quality composite material

TECHNICAL DATA

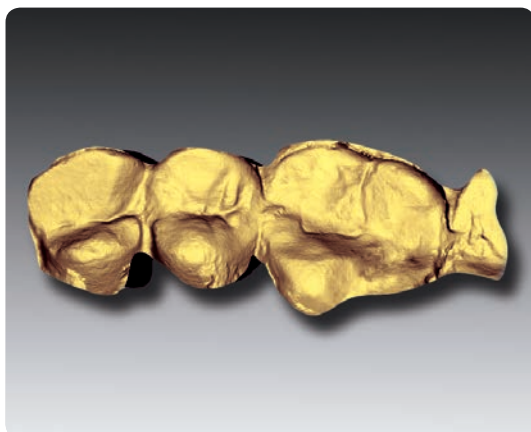
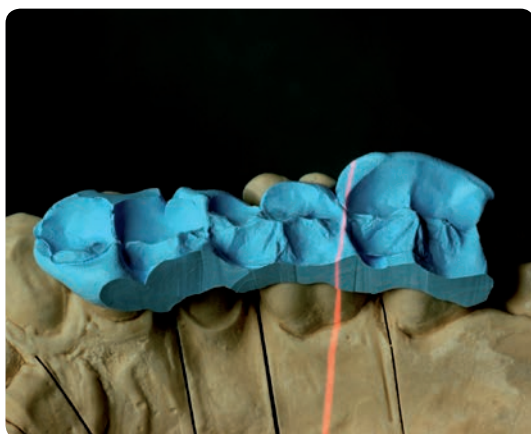
Mixing time	30"
Working time	1'
Setting time (minimum)*	4'
Shore-A hardness	75

* The times indicated may vary according to room temperature and mixing technique.

Occlufast CAD

Scannable A-silicone for bite registration in the dental surgery

Innovative and extremely fast



USES

- Bite registrations with all techniques requiring subsequent reading with CAD/CAM systems.

ADVANTAGES

- Compatible with CAD/CAM systems with optical, laser and tactile reading
- Brief period in mouth (≤ 60 sec)
- Imperceptible consistency to the patient, ensures a natural bite
- Can be trimmed with a knife and/or bur after setting
- Easy to apply in the mouth using either the open or closed mouth techniques

TIPS

With just a short period in the mouth (60sec), **Occlufast CAD** allows precise bite registration keys to be produced in the dental surgery, with maximum patient comfort, optimising subsequent work in the dental laboratory.

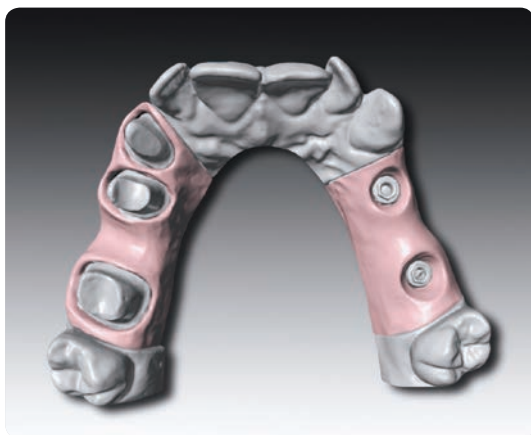
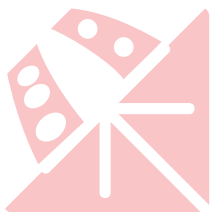
TECHNICAL DATA

Mixing ratio	1:1
Working time	30"
Time in mouth	60"
Shore A hardness	95

Gingifast CAD

Scannable A-silicone fluid for the laboratory reproduction of artificial gums

Rigid and Elastic: double version for all applications



USES

- Reproduction of gum morphology in scannable polyvinyl siloxane

ADVANTAGES

- Perfectly reflective surface, suitable for scanning with CAD/CAM systems with optical, laser and tactile reading
- Two hardness versions Rigid (70 Sh-A) and Elastic (40 Sh-A) ideal for silicone gums on models with prostheses, bridges or crowns
- Both versions can be finished with scalpels or burs, thanks to the use of latest generation raw materials
- Perfectly compatible with any technique (direct, indirect) for producing artificial gums on models
- Less silicone waste, thanks to the new formula allowing very small mixing tips to be used.

TIPS

For all applications. The Elastic version with high tear resistance is recommended in the presence of undercut areas or very thin marginal gum tissue.

The Rigid version is ideal for applications requiring a high degree of hardness

TECHNICAL DATA

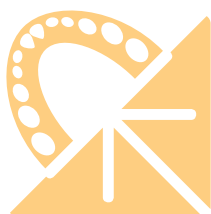
ELASTIC RIGID

Mixing ratio	1:1	1:1
Working time	2'	2'
Setting time	10'	10'
Shore-A hardness 40	40	70

Elite Master & Elite Rock

Type IV dental stones for the production of scannable models

No compromises precision and speed



Colours

Elite Master

- desert sand
- sandy brown
- soft grey

Elite Rock

- silver grey

Elite Rock Fast

- silver grey



TIPS

Elite Master

The resin particles included in the formula provide high elasticity and splintering resistance for optimal chamfering.

Elite Rock & Elite Rock Fast

For higher compressive strength.

To reduce abrasion to a minimum and guarantee excellent precision.

USES

- Models and removable dies for fixed and removable prostheses and implants.

ADVANTAGES

- Desert sand, sandy brown and soft grey coloured models are perfectly detectable with all modern laser and optical scanners, thanks to the special formula developed for reading with CAD/CAM systems.

TECHNICAL DATA

Elite Master

Water/powder ratio	21 ml/100 g
Removal time	45'
Expansion after 2 h	0,08 %
Compressive strength after 48 h	75 MPa (765 kg/cm ²)

Elite Rock

Water/powder ratio	20 ml/100 g
Removal time	45'
Expansion after 2 h	0,08 %
Compressive strength after 48 h	81 MPa (826 kg/cm ²)

Elite Rock Fast

Water/powder ratio	20 ml/100 g
Removal time	25'
Expansion after 2 h	0,08 %
Compressive strength after 48 h	81 MPa (826 kg/cm ²)

CAD/CAM solutions



Packs		Accessories	
Platinum75 CAD			
C400741	1 x 800 g container Base + 1 x 800 g container Catalyst		
Occlufast CAD			
C200800	2 x 50 ml cartridges (Base + Catalyst) + 12 green mixing tips	C202095	Bite Tips Clear Transparent bite registration tip (x48)
C202080	Green mixing tips (x48)	C202100	Dispenser D2 - 1:1
Gingifast CAD			
C203227	2 x 50 ml cartridges Elastic (Base + Catalyst) + 12 x blue mixing tips + 1 x 10 ml bottle Separator	C203233	Blue mixing tips (x48)
C203232	2 x 50 ml cartridges Rigid (Base + Catalyst) + 12 x blue mixing tips + 1 x 10 ml bottle Separator	C202100	Dispenser D2 - 1:1

	200 g	1 kg	3 kg	25 kg box	25 kg drum
Elite Master					
desert sand	-	C410401	C410402	-	-
sandy brown	-	-	C410410	-	-
soft grey	-	-	C410406	-	-
Elite Rock					
silver grey	-	-	C410010	C410202	C410330
Elite Rock Fast					
silver grey	-	-	C410155	C410206	C410338

BRANCHES

GERMANY
Zhermack GmbH Deutschland
Öhlmühle 10 - D-49448 Marl

T +49 (0) 54 43 / 20 33 - 0
F +49 (0) 54 43 / 20 33 - 11
info@zhermack.de
www.zhermack.de

POLAND
Zhermapol Sp. z o.o.
ul. Augustówka 14
02 - 981 Warszawa - Polska

T +48 22 858 82 72
+48 22 292 71 17
F +48 22 642 07 14
biuro@zhermack.com
www.zhermapol.pl

USA
Zhermack Inc.
P.O. Box 4195, River Edge
New Jersey 07661 - 4195

T +1 (877) 819 6206
+1 (732) 389 8540
F +1 (732) 389 8543
info@zhermackusa.com
www.zhermackusa.com