

Desktop Health™

Permanent Printable Smiles



Flexcera™ dental resins deliver the perfect blend of strength and comfort with best-in-class esthetics, fit, and finish





Personalize Patient Care

Flexcera dental resins

Embrace what makes everyone so uniquely beautiful with Flexcera premium performance materials.

We believe in personalized patient care that enhances each individual smile, which is why we make natural teeth and gingiva shades with lifelike esthetics to create beautiful prosthetics that are comfortable, durable, and made to fit.

Deliver the perfect fit and finish, for everyone, with Flexcera.



Walter Voit, PhD
Sr. Vice President of Polymers
Desktop Health

Meet Desktop Health

Our promise

Premium dental care that is beautiful and durable for a predictable patient experience.

Our mission

Empower your digital workflow with premium 3D printing technology trusted for 20+ years to improve patient lives.

Our story

Born from EnvisionTEC, Desktop Health was created in 2002 by leading experts in advanced manufacturing, material science, and engineering with the goal of making quality dental 3D printing for **personalized patient care.**

Flexcera denture images (pages 5-6) courtesy of Absolute Dental Services.



For **Trusted, Regulatory Approved** Digital Dental Prosthetics

Reach for Flexcera



FDA
Cleared

MDR
Certified

CE
Marked

Proven performance

- 3+ years in development and >200 formulations studied to ensure predictable, reliable, and repeatable results
- Disciplined in regulatory processes, certified in ISO 13485, passing a suite of biocompatibility testing for dentistry
- Flexcera Smile Ultra+ is an FDA 510(k) cleared Class II, CE marked, and MDR Class IIa certified medical device for 3D printing permanent or temporary restorations
- Flexcera Base Ultra+ is an FDA 510(k) Class II cleared, CE Marked, and MDR Class I certified for additive manufacturing of full denture bases and partials.

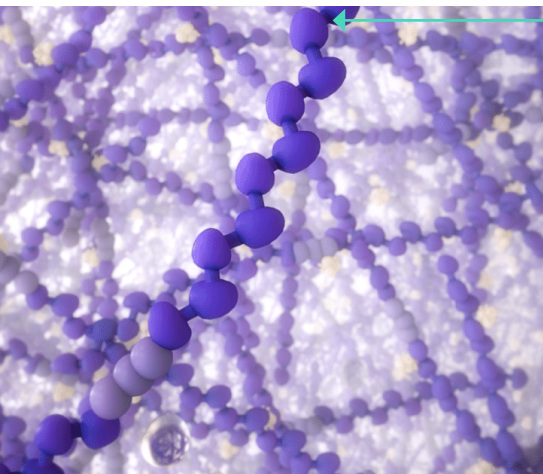


Scan to request your Flexcera technical specifications

Premium Performance

Ceramic-like strength in a bottle

Leveraging proprietary long-chain chemistry, Flexcera is one of the strongest and most esthetic dental resins on the market compared to the leading competition.



Synthesized long-chain chemistry

Longer equals stronger

Polymerized by high-powered 385 nm DLP projector

For an efficient cure in print

For an efficient cure in print

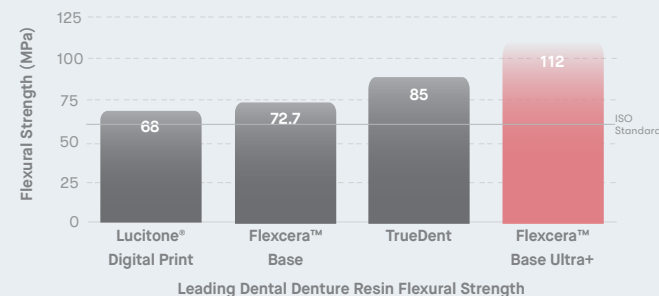
Results in tightly cross-linked polymers

For ceramic-like strength

1. Resistance to deformation defined by Flexcera Base Ultra+ DIN EN ISO 20795-1 flexural strength (MPa) when used in the Otoflash curing unit, results on file, 08/2023; Lucitone® Digital Print Denture Balanced Material Properties by Dentsply Sirona published January 2024; and Polyjet Dental Materials TrueDent Specifications by Stratasys as published January 2024. 2. Moisture resistance third-party tested for Flexcera Smile vs. NextDent MFH Bleach, 2021 (results on file). 3. Independent volumetric wear study (all results on file) from University of Alabama at Birmingham, 2022; Flexcera Smile Ultra+ vs. Lucitone® IPN Premium Tooth by Dentsply Sirona and OnX™ by SprintRay.

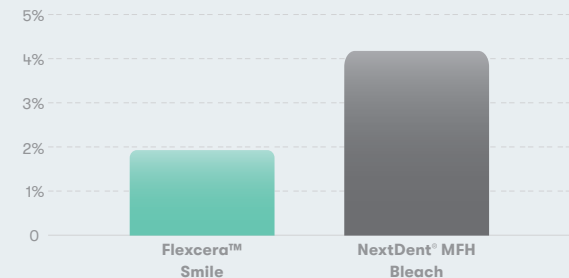
70%
Greater Resistance to Deformation¹
vs. ISO Standard

3-Point Flexure Fixture with temperature controlled bath 37° C (±1°)



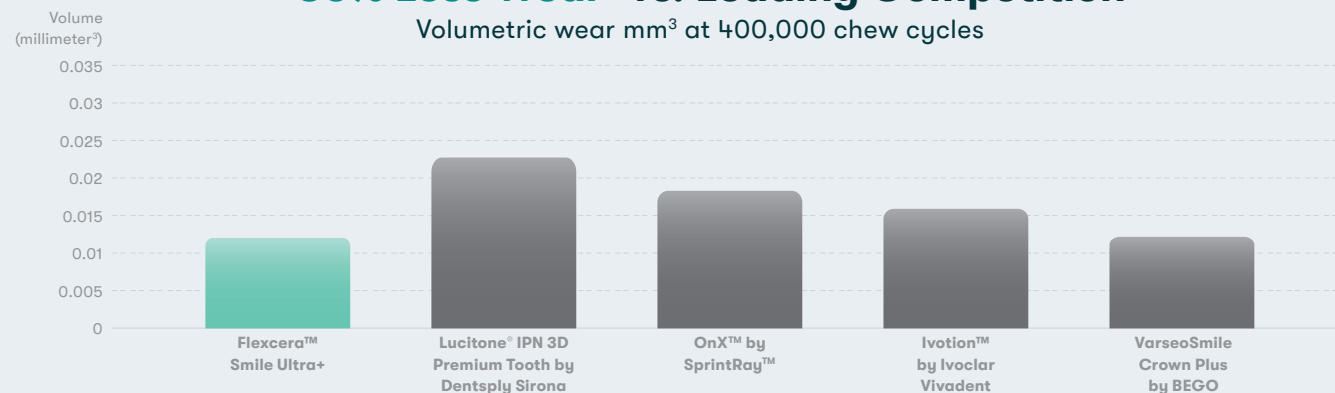
~2X
More Resistant to Moisture²

Water Absorption (w%) 2 days at 37°C



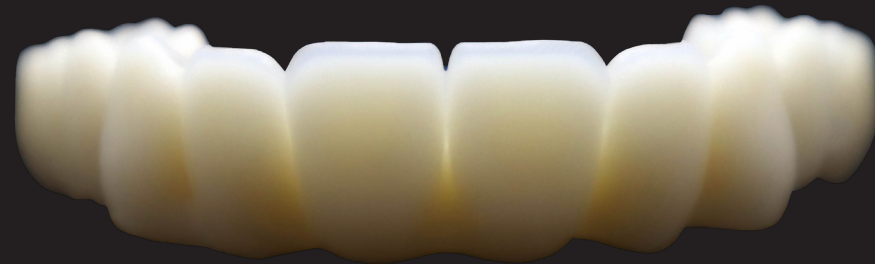
>30% Less Wear³ vs. Leading Competition

Volumetric wear mm³ at 400,000 chew cycles



Engineered for **Lifelike Translucency** & Esthetics

A hybrid nanoceramic with optimized index of refraction



Full arch of teeth with smooth surface resolution right off the printer, for simplified post-processing and easy finishing and characterization

For the Perfect Finish

Reach for Flexcera



Add your artistic touch to monolithic dentures with custom characterization for a personalized finish



Characterized anterior implant crown with stunning incisal edge translucency



Characterized full coverage posterior molar crown with detailed anatomy

For Permanent Printable Smiles

Available as Flexcera Base Ultra+ for removable denture bases and next-generation Flexcera Smile Ultra+, a hybrid nanoceramic resin for a wide range of permanent and temporary dental prosthetics.

Globally available markets, and growing

- | | | |
|----------------|---------------|--------------------|
| Australia | Greece | Poland |
| Austria | Hungary | Portugal |
| Belgium | Iceland | Republic of Cyprus |
| Bulgaria | Ireland | Romania |
| Canada | Italy | Slovakia |
| Croatia | Latvia | Slovenia |
| Czech Republic | Liechtenstein | Spain |
| Denmark | Lithuania | Sweden |
| Estonia | Luxembourg | United Kingdom |
| Finland | Malta | United States |
| France | Netherlands | |
| Germany | Norway | |



Indications for use:

- Full dentures
- Monolithic and partial dentures
- Veneers, inlays, and onlays
- Crowns and bridges



Keep up with the latest Flexcera formulations, advancements and regulatory approvals at TeamDM.com/KeepInTouch

Personalize your patient shades

Flexcera Smile Ultra+

6 colors to match natural teeth



Available in the US

- 1 kg and .5 kg bottles in all shades for Desktop Health™, ETEC, and Asiga® 3D printers
- 1 kg bottles of Bleach, A1, A2, and B1 for Carbon 3D printers

Available in the European Economic Area

- 1 kg and .5 kg bottles in all shades for Desktop Health, ETEC, and Asiga 3D printers
- 1 kg bottles of Bleach, A1, A2, and B1 for Carbon 3D printers

*Flexcera Base for Asiga is available in all shades and markets except Australia

Flexcera Base Ultra+

5 colors to match natural gingiva



Available in the US, Canada, European Economic Area, UK, and Australia

- 1 kg bottles in all shades for Desktop Health™ and ETEC 3D printers
- Flexcera Base 1 kg bottles in all shades for Desktop Health, ETEC, Carbon, and Asiga* 3D printers



Scan to request your Flexcera technical specifications

Throughput & Print Times

Einstein™ 3D Printer Series

High-precision digital light processing 3D printers meticulously designed for dental professionals to deliver on the key features in 3D printing: **accuracy, throughput and versatility.**



Einstein

Same-day speed

- 8 full arch teeth, or 112 crowns, inlays, onlays, and veneers in 14 min
- 10 monolithic dentures in 84 minutes
- 9 full denture bases in 97 minutes

Print speeds may vary, size and depth dependent



112 teeth
in **14 minutes**

Made to fit your throughput needs

Improve overall efficiency and turnaround time with Einstein



Einstein Pro XL

High production

- 15 full arch teeth, or 330 crowns, inlays, onlays, and veneers in 34 minutes
- 14 monolithic denture bases in 79 minutes
- 21 full denture bases in 92 minutes



14 monolithic dentures
in **79 minutes**

Also validated on specified Carbon and Asiga DLP Printers

Premium Performance Digital **Prosthetics**

Flexcera esthetics, function, and fit

Our premium performance materials have been revolutionizing dentistry for years, and we're just getting started.

With more than 100k digital prosthetics printed to date, Flexcera delivers a reliable and durable product that takes your digital dentistry to the next level.



Workflows and total appointments may vary dependent on dentist, lab, and patient scheduling

What's the additive advantage?

Patient convenience

- 2-3 denture appointments vs. 5 with traditional methods
- Copy dentures to tailor fit and reduce adjustments
- No new impression needed for lost dentures or temporaries – simply reprint for a fast turnaround

Multiple prints for efficient output

Low-cost per print with same-day speed

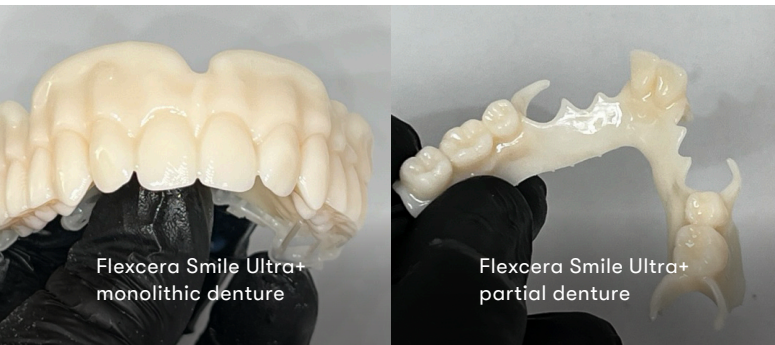


Digital Dentures

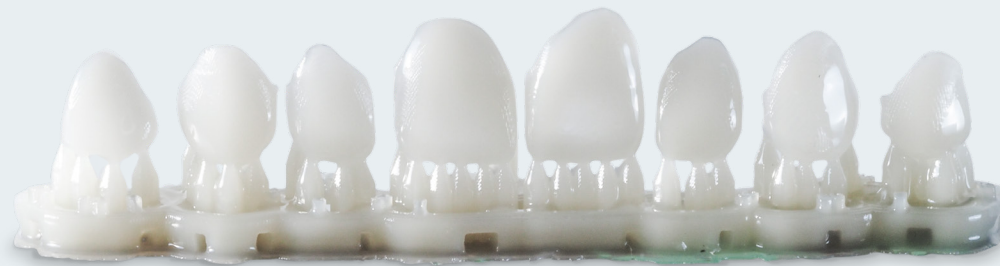
3D print your:

- Full denture bases and teeth
- Monolithic and partial dentures

Fabricate permanent and temporary dental prosthetics that deliver the perfect blend of durability and beauty.



Flexcera Base Ultra+ denture base and Flexcera Smile Ultra+ denture teeth

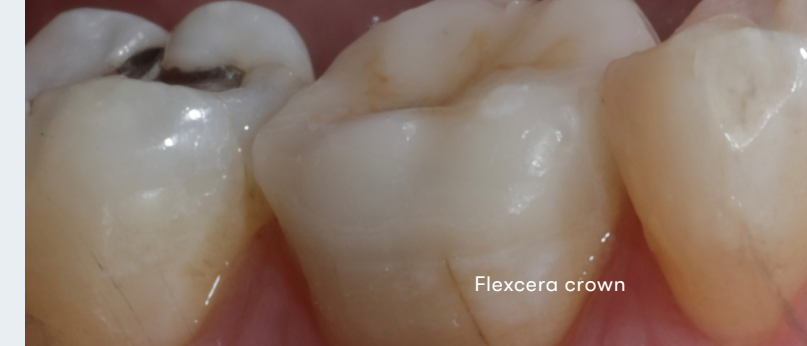


Digital restorations

3D print your:

- Full-coverage crowns
- Implant crowns
- Implant bridges (up to 6-unit bridge with two not adjacent pontics)
- Inlays and onlays
- Veneers

Personalize your permanent and temporary dental prosthetics that blend beautifully with natural teeth for a lifelike fit and finish.



Flexcera crown

Flexcera implant bridge facial



Flexcera implant bridge lingual



Life-Changing Esthetics



“Flexcera Smile Ultra+ has changed the way I do esthetic cases.

So many **patients are hesitant to undergo esthetic changes** because they can’t see our vision for changing their smile.

With Flexcera Smile Ultra+, **I print the mockup and let the patient wear it home** to show their family and friends.

This brings so much confidence in our services that patients can’t wait to come in for their porcelain cosmetic treatment.”

— **Dr. Nish Dalal**, Downtown Dental | Charlottesville, VA

Flexcera



Fit



Pre-Op



Patient case images courtesy of Downtown Dental

Hear from the Patients

At Desktop Health, we're here for the smiles



Meet Debbie, who has rediscovered the joy of expression with her beautiful Flexcera Smile.



Meet Solomon, who reconnected to life with the confidence of his Flexcera Smile.



Meet Ray, whose journey to reclaim his smile has transformed his life forever with his radiant Flexcera Smile.



Watch, enjoy, and see the “before shots” of our Flexcera Smiles patient celebration stories at TeamDM.com/FlexceraSmiles



Learn from the Experts

Education is a pillar of success

Delve into our Desktop Health Flexcera Webinar Series to learn from the experts — our customers — about the benefits, workflow, and why they chose Flexcera for their doctors and patients.



The Power of Flexcera

Frank Acosta
AA Dental Design



Polish & Finish Flexcera Resins

Eric Muraoka, DMD
Kaizen Dental Clinic



Scan to watch our on-demand Flexcera Webinar Series

Personalize Your Patient Care

Flexcera from Desktop Health

Find out more

TeamDM.com/FlexceraInfo

With a CD in hand, Ray Philon approached Dr. Rami Jandali at Amazing Smiles expressing his desire for an “AI Green smile.” With Dr. Jandali’s Flexcera digital workflow, his dream became a reality.



Desktop Health is the trusted health brand of Desktop Metal (NYSE:DM).

DM is driving Additive Manufacturing 2.0, a new era of on-demand, digital mass production of industrial, medical, and consumer products.

Learn more at TeamDM.com/Health

Desktop Health
63 Third Avenue | Burlington, MA 01803
(866) 344.3578
#TeamDM | NYSE:DM

© 2024 Desktop Metal, Inc. All rights reserved.