

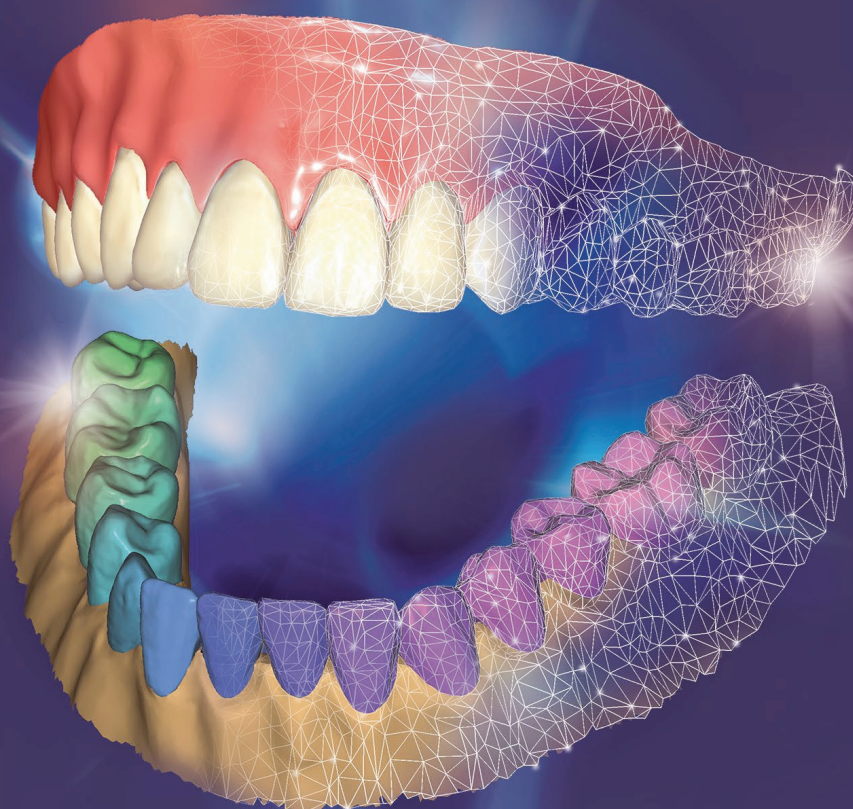
WHAT'S NEW ENGLISH



DentalCAD®
3.2 Elefsina

FOR MORE AUTOMATION

UPGRADE NOW!



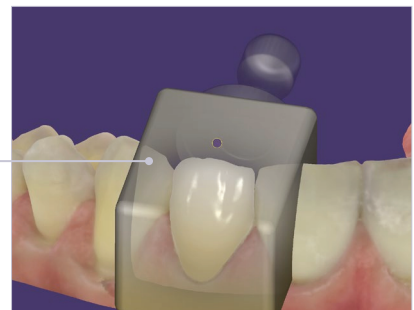
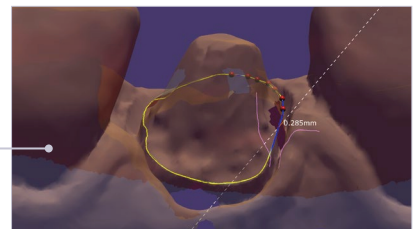
exocad

Enjoy **more automation and speed** with more than 60 new features

DentalCAD 3.2 Elefsina improves workflows—from treatment planning to design and manufacturing.

New features, more automation and seamless integration

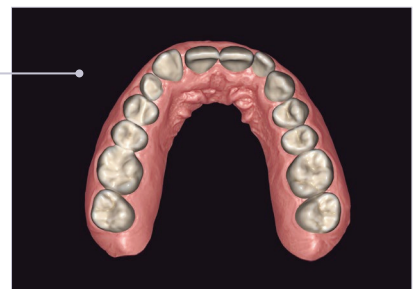
- **Preparation margin repair tool** enables you to make the most out of imperfect intraoral scans: fix margins to get an acceptable result despite artifacts or holes in the scan
- Save time with **Auto Articulator** for automatic dynamic occlusion*
- **Integration of compact milling machines:** select your preferred block and start production seamlessly from within your CAD software*
- **Switch** tooth libraries while **keeping the previous setup**



*Requires add-on module

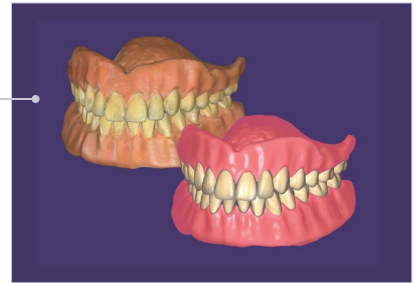
Elevated *Smile Creator* for better visualization and preoperative treatment planning

- Design smiles **with virtual gingiva** for superior outcomes
- Design smiles based on patients' **natural teeth**
- Improved 3D-to-photo alignment: **adjust 3D view to match rendering to the camera's focal length**



Full Denture Module improved

- **Copy Denture:** instead of relining an old denture, rapidly and inexpensively produce a new one
- Design **dentures on ball attachments**
- Add-on for the **Ivotion™ Denture System** now available with the *Full Denture Module**



*Ivotion™ library purchase from Ivoclar required

Bite Splint Module offers more design speed

- More **automation** in bite splint design
- Design **bite splints for both arches simultaneously**



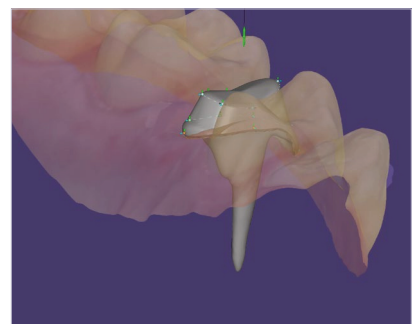
iTero-exocad Connector™ redefines seamless workflows

- Lab/doctor collaboration: **doctors can now share external case-related files** (images, videos and X-rays) via the MyiTero™ portal
- New **bidirectional case communication** lets you share designs in 3D
- **Validate margins** with iTero intraoral camera images and visualization of tooth structure with iTero NIRI images



New beta feature: post and core*

- Design **post and core** restorations
- A **crown matching the core** can then be **directly designed**



*Available upon request for beta testers



DentalCAD 3.2 Elefsina: new features, **more automation and seamless integration**

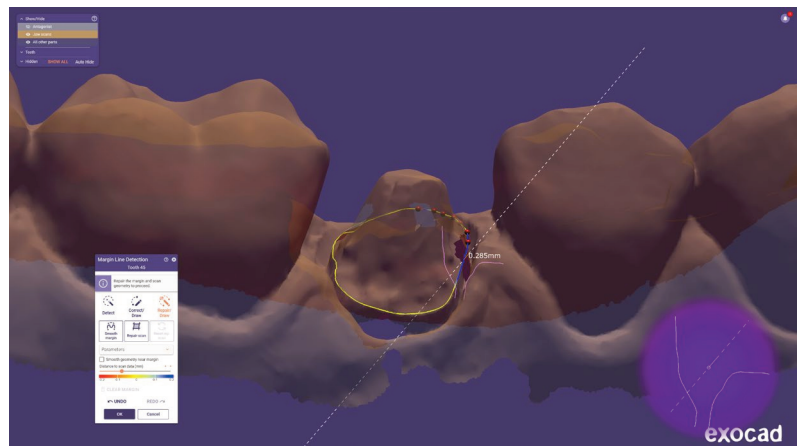




Preparation margin repair tool

Make the most out of imperfect intraoral scans.

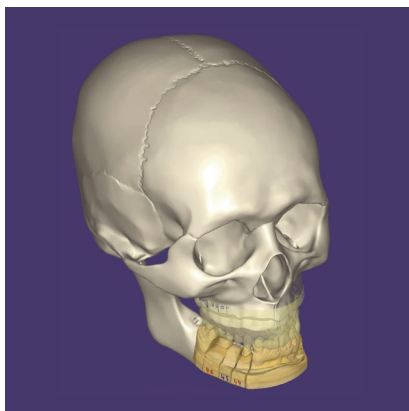
- Fix margins to get an acceptable result despite artifacts or holes in the scan
- Original and edited files are saved in the project folder, giving you full control and an easy overview of the changes



New Auto Articulator

The new Auto Articulator lets you save time by automatically placing the upper and lower jaw into dynamic occlusion.*

- Often, no articulator is used for single-tooth restorations, but now this is enabled automatically
- Digitally adjust occlusion and reduce design time
- You can now use the *Virtual Articulator* for full dentures

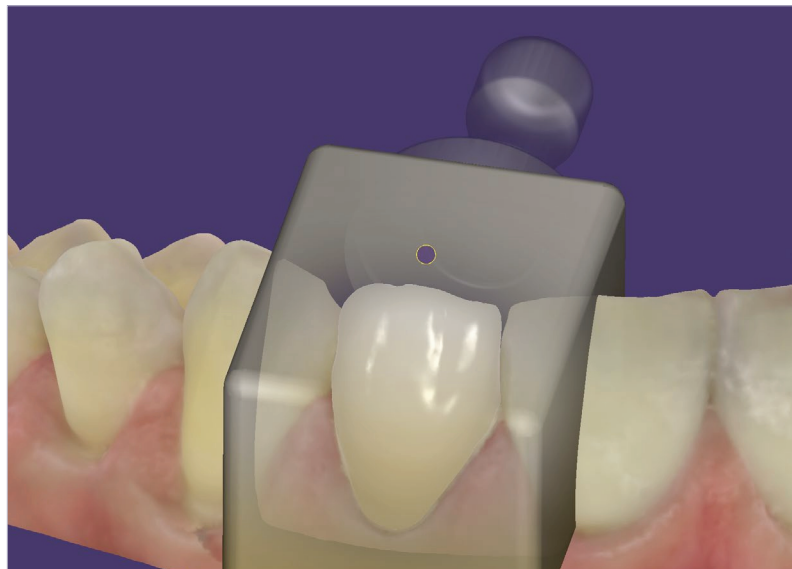


*Requires add-on module

Integration of compact milling machines

Select your preferred block and start production seamlessly from within your CAD software.*

- An optimized single-tooth workflow offers more automation and less need to switch between applications
- Easily adjust the position and shading of your design in a multilayered block

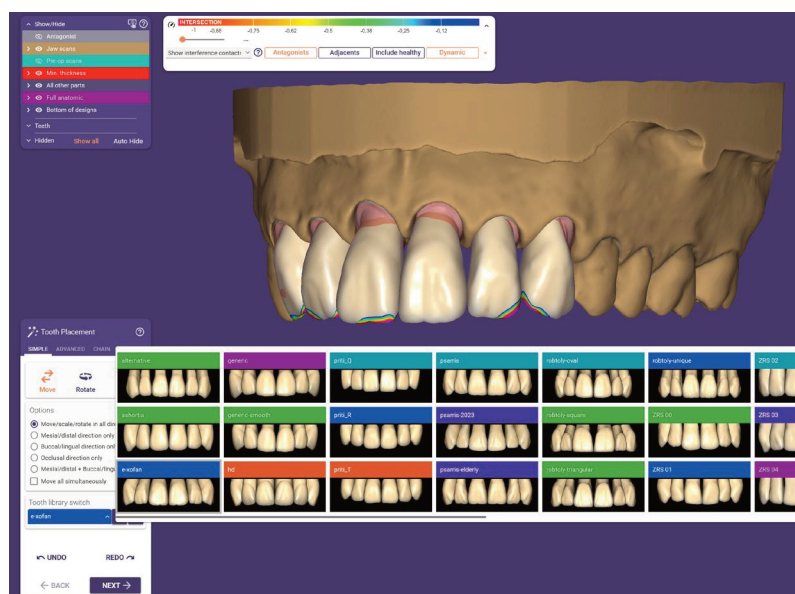


*Requires add-on module

Switch tooth libraries while keeping your multi-tooth setup

Easily switch between tooth libraries within your tooth setup to find the most suitable library for your patient.

- Tooth setup remains unchanged



Elevated *Smile Creator* for **better visualization** and **preoperative treatment planning**



Increased ease of use in the *Smile Creator* workflow

Sophisticated software tools for gingival shaping and darkening effects of posterior teeth show a more realistic outcome of the treatment result.

- Generate virtual gingiva in *Smile Creator* for more realistic outcomes
- Use patients' natural teeth as a template for the new smile with tooth segmentation



Free-forming in secondary views

- More design convenience in the *Smile Creator* workflow with the possibility of free-forming in the secondary views
- View and edit the restoration simultaneously from various angles

Field of View slider for more accurate alignment

Use the Field of View slider to correct camera and lens characteristics

- Better alignment with the photo for both anterior and posterior teeth
- More accurate match of 2D patient picture and 3D scans



Full Denture Module **improved**

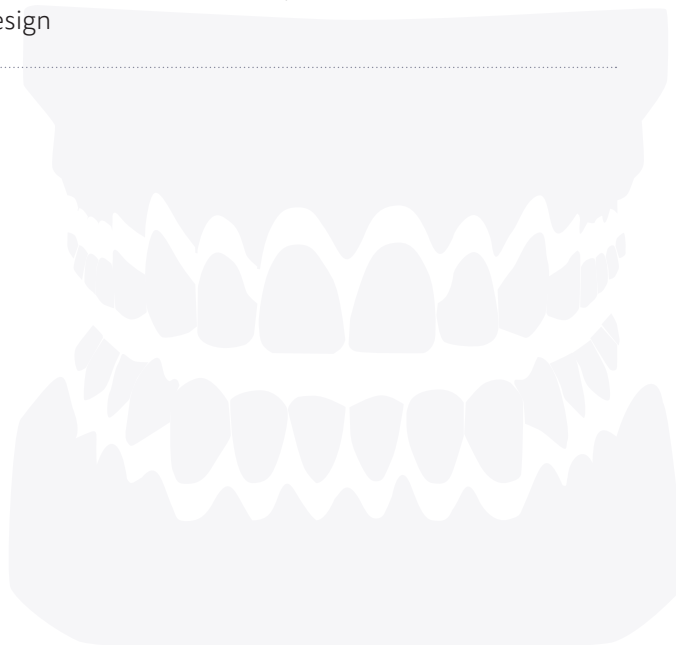




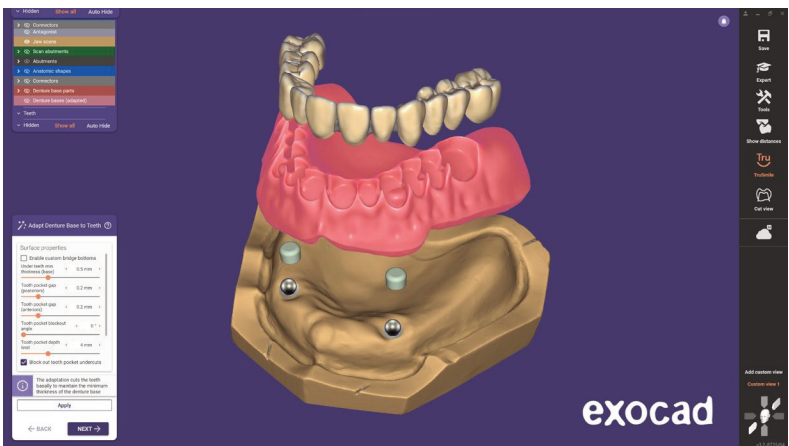
Copy dentures

Easily and efficiently provide your patients with new dentures, based on the previous ones.

- Instead of relining an old denture, quickly and inexpensively produce a new one
- Save time with this straightforward and effective method of providing a replacement set of complete dentures to your patient
- After the tooth segmentation, the teeth can be repositioned and free-formed to change the existing design



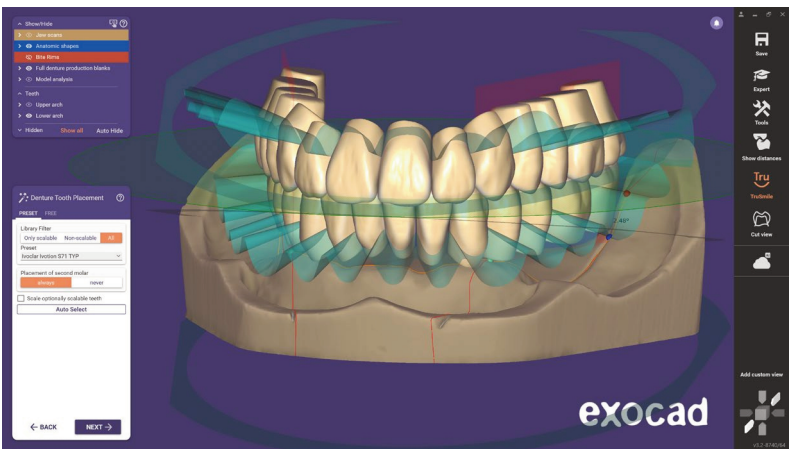
Design dentures on ball attachments



DentalCAD and exocad's implant planning software *exoplan* are seamlessly integrated. You can design and manufacture snap-on dentures on implants preoperatively for immediate loading.

Add-on for the Ivotion™ Denture System now available

Offer high-quality Ivotion™ dentures to your patients.*



- The Ivotion™ blank combines a proven highly esthetic PMMA tooth material with a premium denture base material
- The milled denture only requires polishing

*Ivation™ library purchase from Ivoclar required

For more information,
visit exocad.com/ivotion

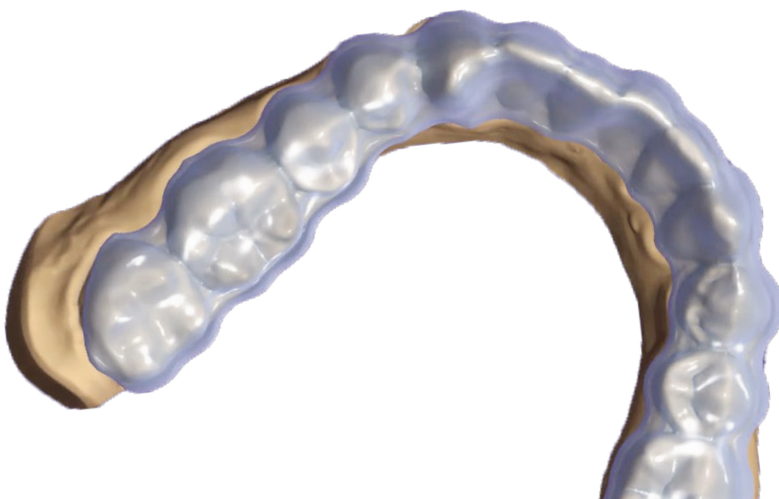


Bite Splint Module offers **more design speed**



More automation in bite splint design

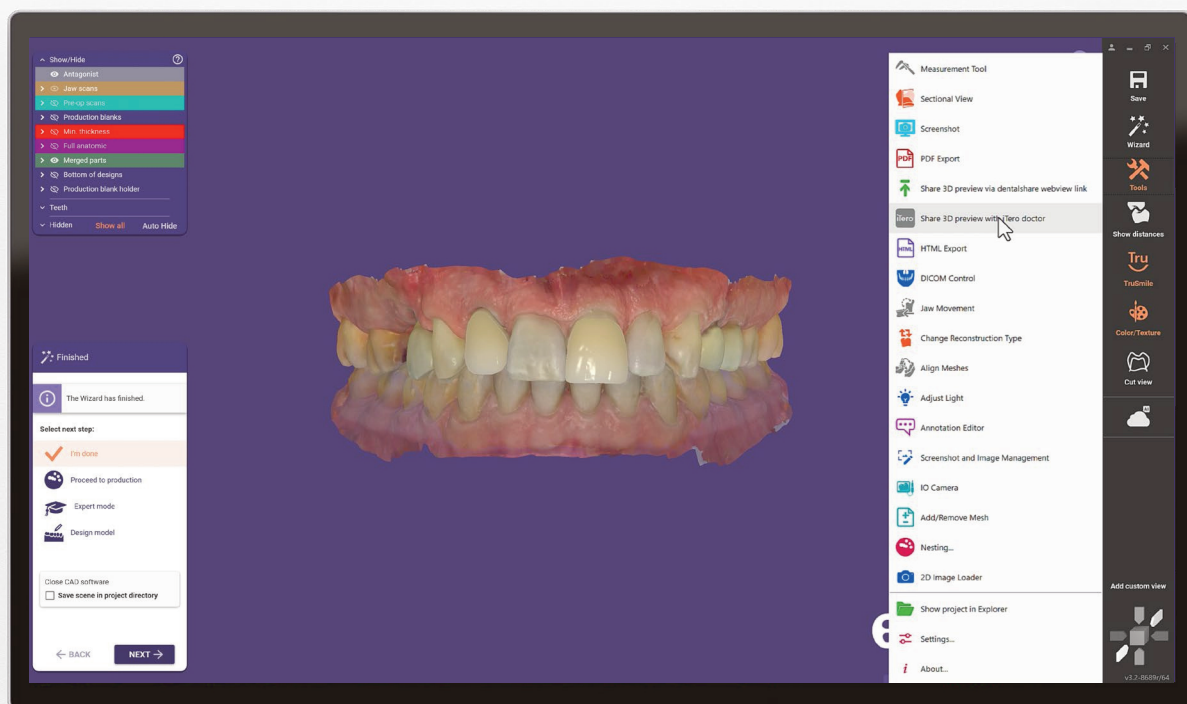
- Teeth can be automatically recognized in the scan, enabling highly automated bite splint design
- Adjust the bite splint curve by moving a slider, saving valuable time
- Design bite splints for both arches simultaneously to save time



iTero-exocad Connector™ redefines seamless workflows

The enhanced iTero-exocad Connector brings the lab-doctor collaboration to another level

- Improved collaboration: doctors can now share external case-related files (images, videos and X-rays) via the MyiTero™ portal with their labs
- New bidirectional case communication lets you share designs in 3D with the clinician
- Doctors can accept or reject designs, avoiding unnecessary remakes

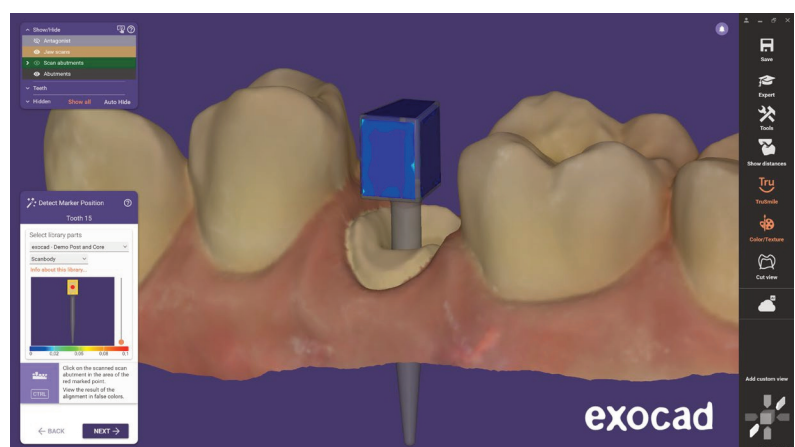


New beta feature: **post and core**



Design post and core* restorations in a single workflow for fast and functional root canal restorations

- Easily design post and core and the matching crown/bridge within the wizard workflow
- Design a more suitably shaped post and core, based on the desired anatomy



*Available upon request for beta testers

exocad.com

Your exocad dealer

No dealer stamp here? Please visit [exocad.com/partners](https://www.exocad.com/partners)

Some products may not be regulatory cleared/released for sale in all markets.
Please contact your local exocad reseller for current product assortment and availability.
Territorial coverage of the registered trademarks is available on our webpage:
[exocad.com/imprint](https://www.exocad.com/imprint)